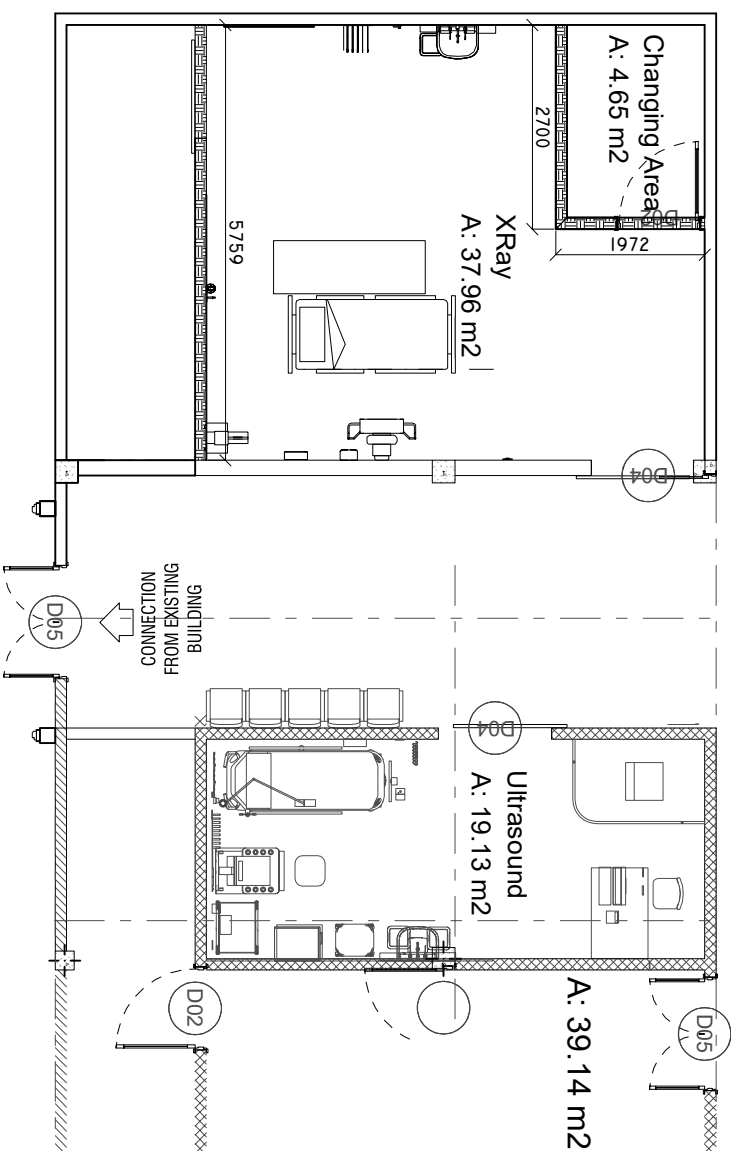


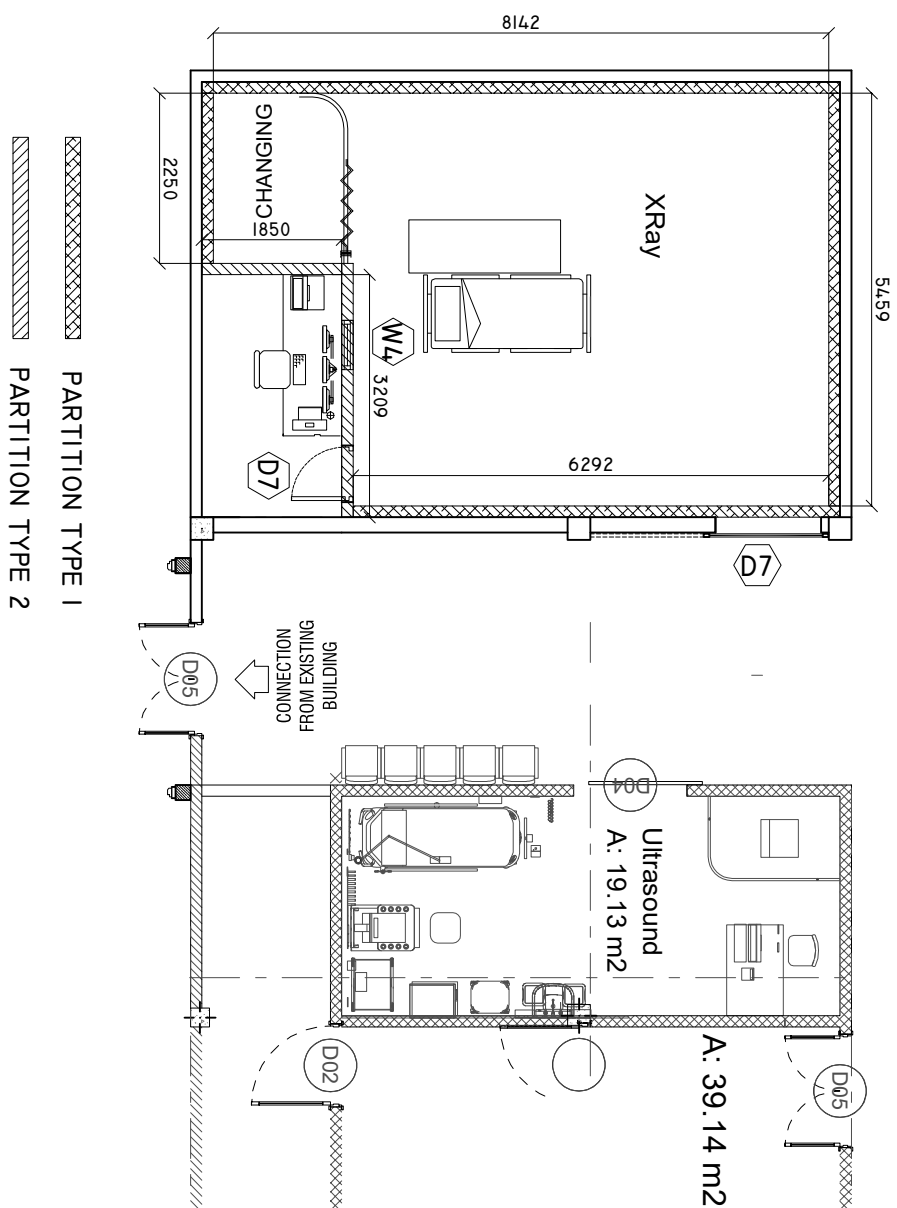
DEMOLITION PLAN

SCALE: 1 : 100



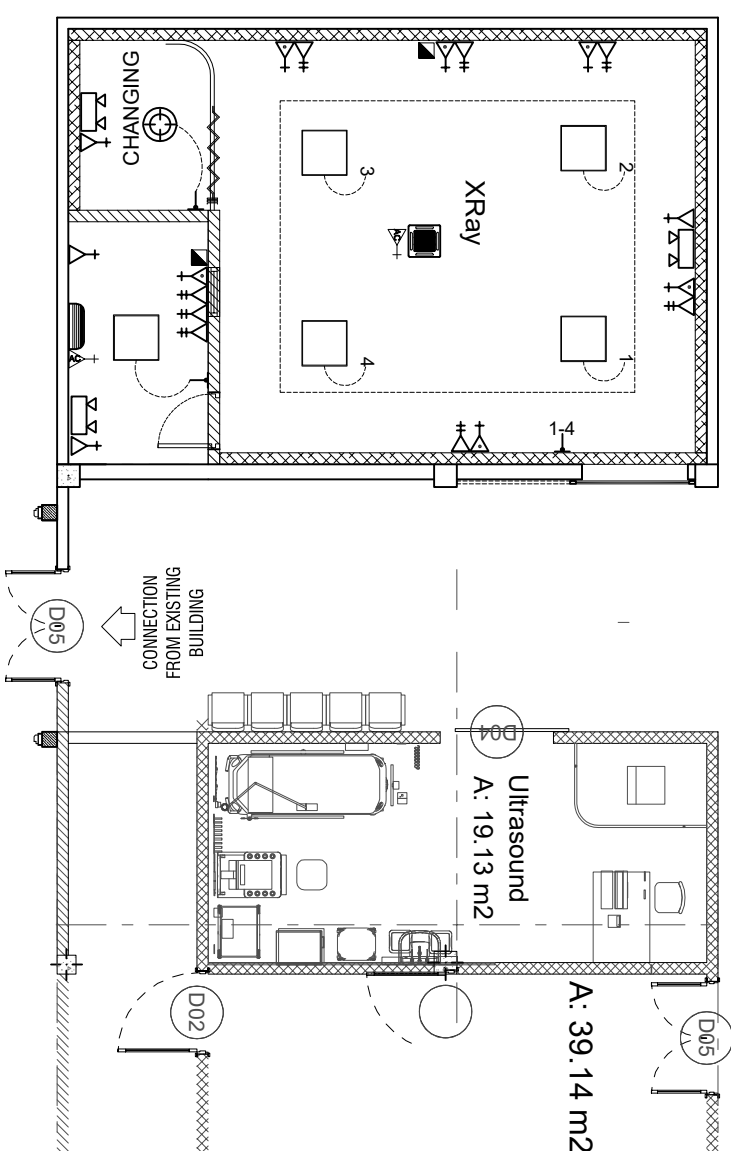
PARTITION PLAN

SCALE: 1 : 100





PARTITION PLAN

SCALE: 1 : 100












LEGEND

SYMBOL	DESCRIPTION
	LED BULB WITH 150MM DOWN LIGHT
D+	1 x 13 AMP SOCKET OUTLET (1200MM ABOVE FFL)
D+	1 x 13 AMP SOCKET OUTLET (300MM ABOVE FFL)
D+	1 x 15 AMP SOCKET OUTLET (300MM ABOVE FFL)
P+	1 x 15 AMP AC SOCKET OUTLET (50MM BLW. CEILING)
⚡	ONE WAY SWITCH
	EMERGENCY LIGHT
⚡	NETWORK SOCKET (300MM ABOVE FFL)
D+	1 x 13 AMP SOCKET OUTLET (200MM BELOW CEILING)

NOTE: EACH LIGHT MUST BE CONTROLLED BY A SINGLE SWITCH.
PANTRY AND LAB AREA SOCKET HEIGHT IS ONE METER FROM FFL

LEGEND

SYMBOL	DESCRIPTION
	5W DIMABLE LIGHT WITH COVERED
	OUTDOOR LIGHT
	NETWORK SWITCH
	PABX
	AC WALL MOUNT UNIT
	AC INDOOR UNIT, CEILING CASSETTE TYPE
	300X300MM HEAVY DUTY EXHAUST
	DUCT FOR AC PIPE LINES, 300--500X200MM
	595X595MM FLAT SURFACE LED LIGHT.

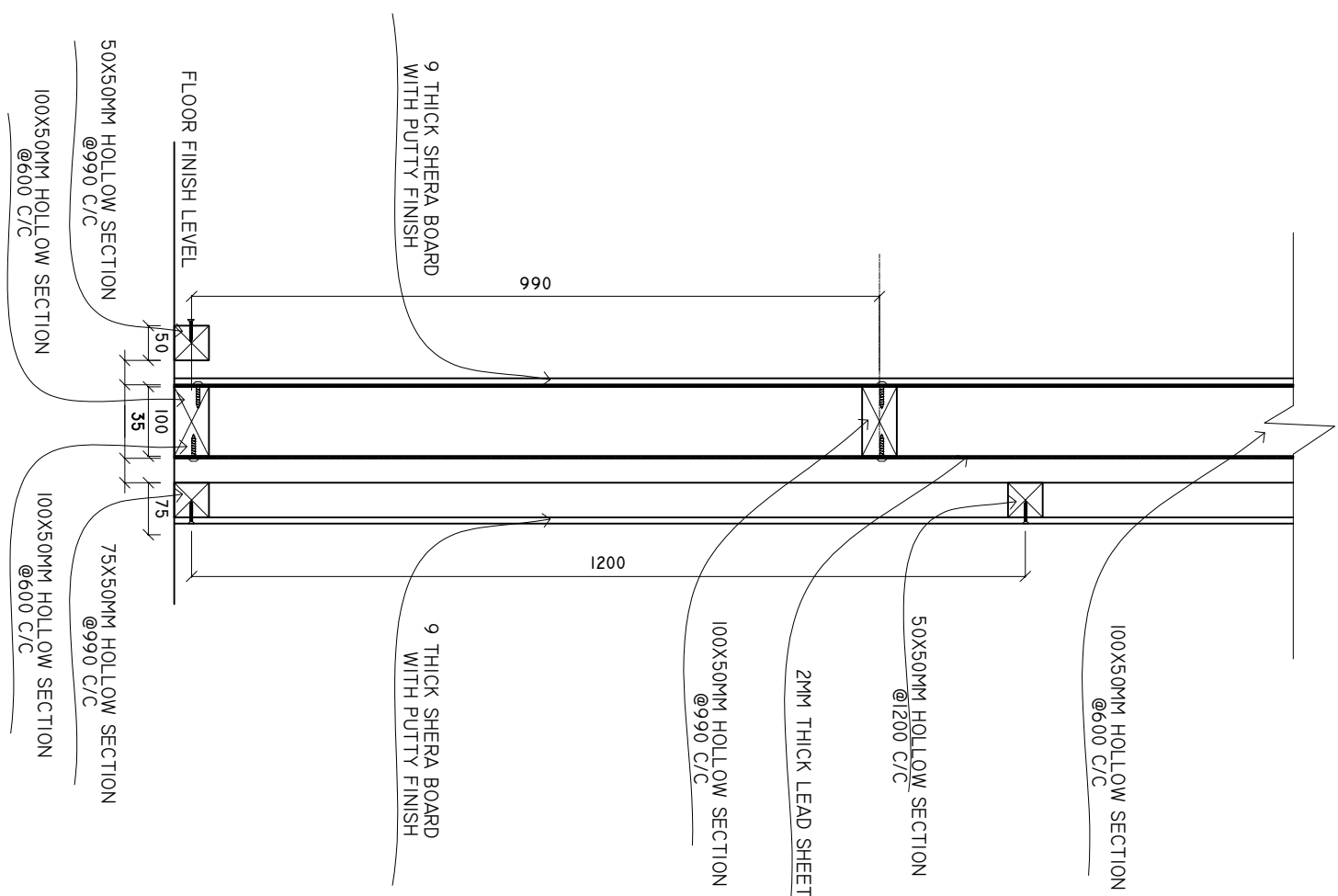
SHEET CONTENTS :
REVISION NOTES:
PROJECT:
CONSTRUCTION OF EXTENSION BUILDING
CLIENT:
MINISTRY OF HEALTH
LOCATION: R. DHUVAARU ISLAND
CONTENTS: AS GIVEN
PROJECT MANAGER:
DESIGNER: ARIZ
CIVIL STR. ENGINEER:
SURVEYED BY: -
DRAWN BY: ARIZ
CHECKED BY:
DATE: APRIL 2025
SHEET NO.: on / 00
PAPER SIZE: A2



Infrastructure Development Unit
Ministry of Health
Roshnee Building
Sasun Mengu'
Tel: 332 8887, Fax: 3328889
Email: projects@health.gov.mv

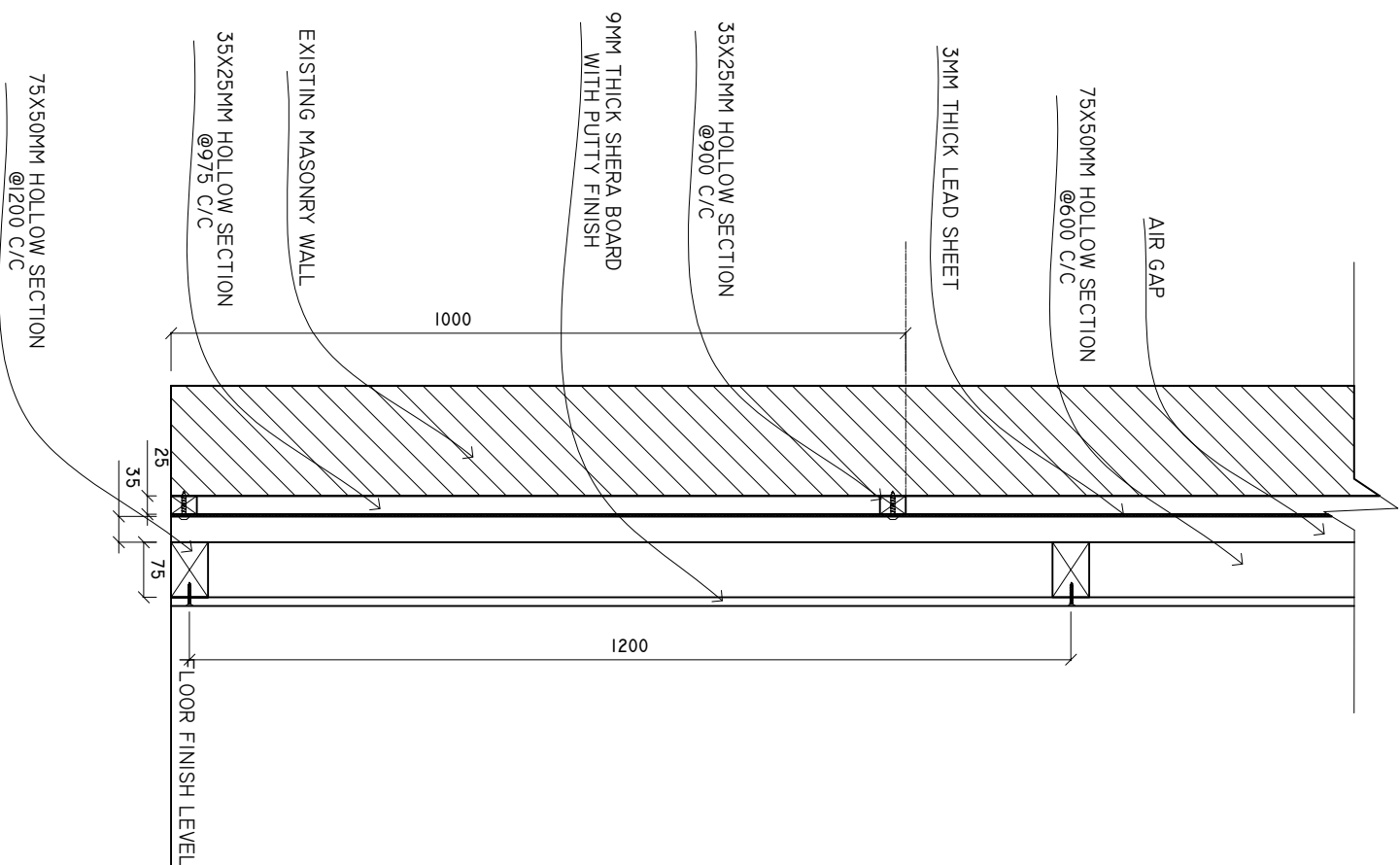
PARTITION DETAILS (TYPE 2)

SCALE: 1 : 10



PARTITION DETAILS (TYPE 1)

SCALE: 1 : 10



DOORS AND WINDOWS SCHEDULE

Scale 1:50

SYMBOL	D7	D8	W4
ELEVATION			
LOCATION DESCRIPTION	GROUND FLOOR	GROUND FLOOR	GROUND FLOOR
FRAME	40MM THICK OPERABLE ALUMINUM FRAMED DOOR ALUMINUM FRAME 80 MICRON POWDER COATED.	50MM THICK OPERABLE TIMBER FRAMED DOOR FRAME: 200MM TIMBER FRAME WITH BORDER ON BOTH SIDE PANEL: TIMBER FRAME WITH 6MM PLYWOOD, ON BOTH SIDE WITH LEAD SHIELDING	TIMBER FRAME DOOR LEAD GLASS
HARDWARE	DOOR CLOSER HANDLE LOCK BUTT HINGE 2MM THICK LEAD SHIELDING	DOOR CLOSER DEAD LOCKS BUTT HINGE 2MM THICK LEAD SHIELDING	PAINT FINISH
GLAZING	C-6MM	C-6MM	
NOTE	ALL MEASUREMENTS TO BE CHECKED ON SITE	ALL MEASUREMENTS TO BE CHECKED ON SITE	ALL MEASUREMENTS TO BE CHECKED ON SITE

NOTE:

ALL MEASUREMENTS TO BE CHECKED ON SITE BEFORE FABRICATION
LD = LEAD CLEAR GLASS

ALL THE ALUMINUM PROFILE MUST BE MINIMUM 2MM THICK. AND PROFILE MUST BE APPROVED BEFORE FABRICATION.

SHEET CONTENTS :
PROJECT :
CONSTRUCTION OF EXTENSION BUILDING
CIENT:
MINISTRY OF HEALTH
LOCATION: R. DHUVAAFARU ISLAND
CONTENTS : AS GIVEN
PROJECT MANAGER
DESIGNER : ARIZ
CIVIL/STR. ENGINEER
SUPERVED BY :-
DRAWN BY : ARIZ
CHECKED BY :
DATE : APRIL 2025
SHEET NO. : 09 / 100
PAPER SIZE : A2



Ministry of Health
Roshanee Building
Sosun Magu'
Tel: 332 8887, Fax: 3328889
Email: projects@health.gov.mv